

You have been sent the ASLRRRA newsletter, *Views & News*, in HTML format. If your e-mail viewer will not accept this format, you can view *Views & News* online at:

http://www.aslrra.org/whats_in_the_news/views_and_news/

American Short Line and Regional Railroad Association

VIEWS & NEWS

VOLUME 73

NUMBER 2

JANUARY 23, 2006

Upcoming 2006 Events

(Click on the meeting
name for more
information)

Rail Security
Conference
Jan. 30-31, 2006
Marriott Hotel
Washington, DC

Railroad Day on
Capitol Hill
March 8, 2006
Grand Hyatt
Washington, DC

2006 Annual
Convention
April 23-25
World Center
Marriott
Orlando, FL

Deadlines

ASLRRRA Susan
Murray Scholarship
Feb. 16, 2006

Railway Age Short
Line/Regional
Railroad of the Year
Competition
Feb. 24, 2006

ASLRRRA Marketing
Awards
March 17, 2006

ASLRRRA Safety
Person of the Year
March 24, 2006

Currently, Railroad
Security Alert Level
2 is in Effect

IN THIS ISSUE

1. [Railway Age Opens Nominations for Short Line/Regional Award](#)
2. [ASLRRRA Receives Visit from TSA Officials](#)
3. [ASLRRRA Welcomes New Members](#)
4. [The Century Group, Inc. Provides Much-Needed Aid](#)
5. [Crouch Engineering Welcomes New Personnel](#)
6. [Rail Gateway Meetings Set](#)
7. [Arkansas & Missouri, U.P., Announce Corn Hauling Partnership](#)
8. [Indiana Rail Road Extension to Export Coal](#)
9. [NARS Announces Operations Testing Class Information](#)
10. [FCC Releases New Radio Frequency Requirements](#)
11. [Drinking on the Job an Increasing Risk](#)
12. [Railinc Short Line and Regional Traffic Index](#)
13. [Steelroads Event Reporting- December 2005](#)
14. [RMI Railconnect Index of Short Line Traffic](#)
15. [Railroad Traffic](#)
16. [Embargo Notices and Reroute Orders](#)

[Questions? Comments?](#)
[E-Mail Us.](#)

RAILWAY AGE OPENS NOMINATIONS FOR SHORT LINE/REGIONAL AWARD

Railway Age is now accepting entries for its annual Short Line/Regional Railroad of the Year awards. The 2006 winners will be awarded specially designed plaques at the American Short Line and Regional Railroad Association Annual Convention in Orlando, FL, this April. Articles describing their achievements will appear in *Railway Age*'s April issue, which will be distributed at the show.

Short line and regional carriers are invited to submit entries describing what they deem to be outstanding achievement in one or a combination of areas. These include, but are not limited to, turnaround situations; consistent excellence; innovation in operations or maintenance; marketing; customer service; enhanced productivity; community relations; safety improvement; and ingenuity in dealing with the unexpected.

Each of the more than 500 smaller roads in Mexico, the U.S., and Canada is eligible for an award and may nominate itself. Size is not important. In the past, awards have gone to carriers ranging from 20 miles to nearly 2,000 miles. In some years, separate awards are given for regional and short line carriers.

Entries should be submitted to: Marybeth Luczak, Executive Editor, Railway Age, 345 Hudson Street, 12th Floor, New York, N.Y., 10014. E-mail: mluczak@sbpub.com. Fax: (212) 633-1863. Entries should contain the name, position, and contact information of the nominator and an approximately 500-word description of the achievement(s) of the nominated railroad.

Entry forms are not essential, but may be obtained from Luczak by fax or e-mail or by clicking [here](#). The entry deadline is Friday, Feb. 24, 2006.

Railway Age works with the winners to publicize the awards in online and national media.

ASLRRA RECEIVES VISIT FROM TSA OFFICIALS

On December 13, ASLRRA welcomed officials of the Transportation Security Administration to its Washington offices. The officials, all of whom were with the agency's Freight Rail Group, briefed ASLRRA staffers on TSA's recent reorganization, which restructures the agency more specifically to individual transportation modes. ASLRRA staffers in turn briefed the officials, several of whom were new to railroading, about short line and regional railroads, including an overview of security initiatives already underway. Both TSA and ASLRRA pledged to continue the strong links already in place between their organizations.

An agency of the U.S. Department of Homeland Security, TSA's mission is to secure and protect the national transportation system by "ensuring domain awareness, preventing and protecting, responding and restoring, and ensuring organizational effectiveness." Kip Hawley, earlier with the Union Pacific Railroad, was recently named to head the agency and Bob Jamison, the former acting chief administrator of the Federal Railroad Administration, has been named its deputy director. James "Jamie" Clarkson was recently named TSA's General Manager for Freight Rail Security.

Additional to its Freight Rail Group headquartered in Arlington, Virginia, TSA has also recently hired 100 rail security inspectors charged with securing and protecting passenger rail and mass transit systems. The inspectors are based at various locations throughout the U.S.

ASLRRA WELCOMES NEW MEMBERS

The following companies have recently become ASLRRA members:

Blackwell Northern Gateway Railroad, 548 Anita Street, Des Plaines, Illinois 60016, (847) 824-1264, Fax (847) 466-9798, e-mail: info@blackwellrr.com, of which John Howell is President, Scott Nauer is Operations Manager, Tammy Weart is Controller, Doug Geren is Designated Supervisor of Locomotive Engineers and Ellen Howell is Medical Coordinator; and

Marquette Rail, LLC, 5550 W. First Street, Ludington, Michigan 49431, (231) 845-9000, Fax (231) 845-9001, e-mail: Kevin.Ruble@MarquetteRail.com, of which Kevin Ruble is President and Chief Executive Officer, Rick Jany is Vice President and General Manager, Judy Petry is Controller, George Micka and Sean Woolworth are Designated Supervisors of Locomotive Engineers and Jolene Gamble is Customer Service Coordinator.

The following companies have recently become associate members:

CLECO Corporation, Drawer A, Rosedale, Virginia 24701, (276) 880-1034, Fax (276) 880-3119, e-mail: safety@clecocorp.com, a construction company providing brush cutting, tie unloading, bridge and culvert repairs, installation, grading and masonry repairs, of which James Shaver is Director of Safety;

HK Engine Components, 4500 9th Avenue, N.E., Suite 300, #46, Seattle, Washington 98105, (206) 838-7772, Fax (206) 838-7773, website: www.hkec.com, e-mail: cmainz@hkec.com, providing new and remanufactured EMD engine components, specializing in EMD power assembly components, of which Chris Mainz is Sales Manager;

MGM Marketing, Inc, 12732 S. Plumm Road, Olathe, KS 66062, (800) 214-7788, Fax (913) 345-8087, website: www.mgmbusinesspartners.com, e-mail: mgm@detailed.biz, buys distressed, refuse, or damaged products and makes sure they are represented properly in the marketplace for the right consumptive use, and operates a full-service transfer and recovery operation, of which Robb Murphy is President; and

Transpo Industries, Inc., 20 Jones Street, New Rochelle, NY 10801, (914) 636-1000, Fax (914) 636-1282, website: www.transpo.com, e-mail: info@transpo.com, manufacturer of the Bodan grade crossing surface utilizing high strength polymer concrete with internal steel reinforcing cage, of which Richard P. Brown is Senior Vice President.

THE CENTURY GROUP, INC., PROVIDES MUCH-NEEDED AID

Recently, the Century Group, Inc. donated concrete steps with handrails to employees of the Port Bienville Railroad/Hancock County Port Authority living in temporary mobile homes since Hurricane Katrina. The Century Group, Inc. is a manufacturer of full depth concrete grade crossings and railroad spill collection systems, based in Sulphur, Louisiana. For more information, please visit The Century Group, Inc. homepage [here](#).

CROUCH ENGINEERING WELCOMES NEW PERSONNEL

Crouch Engineering, which serves as an on-call engineering department for many short line and regional railroads, is pleased to announce the following personnel changes and additions:

Mr. Doug Cochran has recently joined Crouch Engineering as Project Manager. Mr. Cochran has been an active member of the Georgia Railroad Association. Prior to his many years of track and bridge experience with the Georgia Florida Railway, Mr. Cochran served as a track supervisor and bridge supervisor with Southern Railway and Norfolk Southern Railway. He will be heading Crouch Engineering's programs to provide competent, independent track and bridge inspections for the railway industry.

Ms. Rhonda McClain has been engaged as an Engineering Clerk in support of our Project Management staff. Ms. McClain will be responsible for project documentation, project bidding, and other support functions related to all track, bridge, crossing, survey, planning and environmental projects.

Ms. Katherine A. Garland, PE has recently become licensed as a Professional Engineer. Ms. Garland, a former Crouch Engineering co-op student, has inspected hundreds of railroad bridges, developed many Storm Water Pollution Prevention Plans (SWPPP's) and is currently working to develop a 200 acre industrial park.

Crouch Engineering would also like to announce that there will be two openings in its cooperative education program beginning in May, 2006. The assignments are generally a year to 15 months in length, and provide students with training in railway engineering and surveying. We have employed over 20 students over the past 12 years, and have hired 5 former co-ops following their graduation. Interested students should contact Jay Harris, PE (jharris@crouchengineering.com).

RAIL GATEWAY MEETINGS SET

The AAR's Interline Service Management Working Committee has now scheduled its Gateway Performance Improvement meetings for First Quarter, 2006. The meeting for the New Orleans gateway will be held there January 24 and the meetings for the Chicago gateway will be held there on February 1 and 2.

Committee Chairman Tim Heilig advises that short line and regional railroads operating in these gateways, or that have service issues related to traffic flowing through these gateways, are encouraged to attend and participate at these meetings or, if unable to attend, relay on any relevant matters for attention and follow-up. Dave Mears represents ASLRRRA interests to the committee and will be pleased to coordinate with Tim to answer any questions. Contact Dave at dmears@aslrra.org.

Additional Gateway Performance Improvement meetings will be scheduled throughout the year.

ARKANSAS & MISSOURI, UP, ANNOUNCE CORN HAULING PARTNERSHIP

Arkansas & Missouri Railroad struck a deal with Union Pacific Railroad and some of the nation's top poultry companies to start the region's first shuttle line January 10th to transport corn from Van Buren to Springdale.

"The shuttle program will bring grain back into Northwest Arkansas by rail," said Mark Bonnell, systems administrator for Springdale-based A&M Railroad. "Hopefully, we can get 85 to 90 percent of it by rail now." Grain had been the company's top transport commodity, but presently about 50 percent of grain sent to Arkansas customers arrives by truck, Bonnell said. The shuttle arrangement between Union Pacific and A&M Railroad was a deal three years in the making, he added.

A&M Railroad's engineers will operate the cars and locomotive engines owned by Union Pacific for the shuttle line, Bonnell said. The shuttle will operate from Van Buren to deliver grain to poultry operators in Springdale. "Before, we picked up trains in Van Buren and delivered grain with our power. It would take two or three days to unload."

Terry Tucker, feed mill manager for Tyson Foods' Springdale feed site, said the new shuttle line will save the company several cents per bushel of corn. "Plus it gives us cars we can run back and forth," he added. "Every seven to 10 days, we can expect a shuttle train to come in. Before, we just had to buy so many [rail] cars on the open market." Each rail car carries 200,000 pounds of corn that will be mixed by Springdale-based Tyson to create the company's chicken feed. Tyson uses more than 1 million pounds of corn each day, he said. "If we weren't able to get it on rail, we would have to get trucks. It would take 25 to 30 trucks a day to sustain production."

The first delivery provided 73 rail cars. The shuttle train delivered 27 cars of corn to Tyson, 37 cars to George's Inc. and nine cars to turkey processor Cargill Inc., Bonnell said.

Union Pacific spokesman Jason Hess said the Omaha, Neb.-based railroad uses shuttle programs across the southern half of Arkansas to transport corn for poultry companies. "We're able to move the business much more efficiently in dedicated shuttle trains," said Hess, who spent a decade as the senior product manager of domestic grain for Union Pacific before recently moving over to paper goods.

Non-shuttle trains must secure the freight, load the train, find a locomotive to power the train, then take the locomotives off at interchanges with other railroads such as A&M, Hess said. "Now, we're able to turn those very quickly. The power will stay with the train."

INDIANA RAIL ROAD EXTENSION TO EXPORT COAL

Railroad extensions are being planned in southwestern Indiana's Sullivan County to meet expected coal mining growth in the area. Executives of Indiana Rail Road, CSX Transportation, Sunrise Coal LLC, and Hoosier Energy told county officials that changes in the national coal market was prompting renewed interest in Indiana coal.

IRR President Thomas Hoback said he expected more coal from the area being shipped as far as Virginia and the Carolinas since improved technology allows utilities to meet environmental standards while burning Indiana's high-sulfur coal. "We believe Indiana coal will travel further to market than ever before, with from 15 million to 18 million tons of production a year from Sullivan County alone," Hoback said during Tuesday's meeting. Indiana Rail Road is working with CSX on plans to ease use of each other's tracks to improve connectivity and traffic flow on both lines.

Sunrise Coal plans to begin construction of an underground mine near Carlisle, some 40 miles south of Terre Haute, in the spring and start mining work in July 2007, said Brent Bilsland, the company's finance director.

NARS ANNOUNCES OPERATIONS TESTING CLASS INFORMATION

The National Academy of Railroad Sciences will be holding an operations testing class on the following dates: March 14, April 11, May 2, June 20, and August 1. This two day class will assist transportation field supervisors in understanding and successfully conducting quality operations tests. The two day course for ASLRRRA members is set at \$400.00. For more information about the course, please see the [syllabus](#). For more information about NARS, see their [home page](#).

FCC RELEASES NEW RADIO FREQUENCY REQUIREMENTS

Recently, the FCC issued pertinent information regarding FCC rules on Construction or Coverage Requirements and Universal Licensing System Automated Termination Enhancement of radio frequencies. The construction notification topic is relevant to all at this time. A summary of the construction process follows:

1. Upon receipt of a new or modified license, the user has one year from the grant date to provide the FCC a construction notification certifying the construction and operation on the frequencies shown on their license. Note that the construction notification process pertains to the construction/operation dates of frequency use and not that of a location or the license per se.
2. The license certificate received from the FCC for a new or modified license will show a Construction Deadline date to serve as a reminder to file this notification.

3. The licensee can file this notification with the FCC on-line at no cost or TTCI Spectrum Management personnel (719-584-0514) can provide this service for a nominal fee. To notify on-line, the user will need their FCC Registration Number (FRN) and password which was originally received from the FCC when they applied for their FRN. See instructions provided in links from the attached file.
4. For scenarios concerning noncompliance with the construction notification process see the website <http://wireless.fcc.gov/licensing/const-req/autoterm-faq.html#q1> for frequently asked questions and answers.

To review the FCC communication, please click [here](#). If you have any comments, questions or suggestions please call Robert Vandeberg, AAR Frequency Coordinator, at 719-584-0578.

DRINKING ON THE JOB AN INCREASING RISK

According to a new study by the University of Buffalo's Research Institute on Addictions just over seven percent of American workers drink alcohol on the job. Young single men are the most likely to drink and lunchtime is the preferred time to imbibe at work. The study conducted telephone interviews with over 2,800 participants and the sample pool was designed to reflect the demographics of the U.S. workforce from ages 18 to 65. The results are alarming and reflect the fact that close to 19 percent of on-the-job fatalities, the person who dies tests positive for alcohol or drugs or both. (Carolyn Thompson, "Study: 7 percent of workers drink on the job", Newsday, January 10, 2006)

RAILINC SHORT LINE AND REGIONAL TRAFFIC INDEX

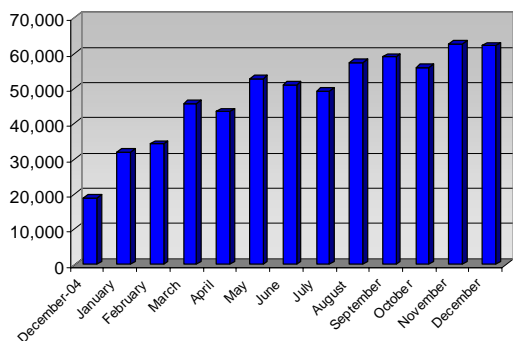
This December, the number of carloads increased by nearly 6,000 as compared to December of 2004, indicating a 1.6% growth. The commodity displaying the largest percentage of growth was Coal at 50.7%. This index is compiled by Railinc as a service to the industry.

For more information on Railinc, please visit www.railinc.com.

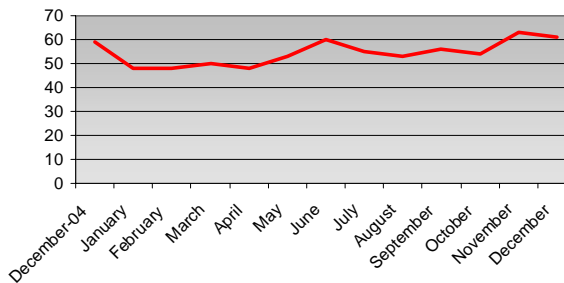
Carloads, by commodity	Carloads Originated December '05	Carloads Originated December '04	% Change
	(Based on 484 railroads)	(Based on 468 railroads)	
Chemicals	34,453	31,004	11.1%
Coal	20,372	13,516	50.7%
Crushed Stone, Sand and Gravel	17,570	13,485	30.3%
Food and Kindred Products	13,882	12,034	15.4%
Grain	27,626	22,927	20.5%
Grain Mill Products	7,481	6,887	8.6%
Lumber and Wood Products	18,158	19,295	-5.9%
Metallic Ores	3,763	7,621	-50.6%
Metals and Products	23,849	24,474	-2.6%
Motor Vehicles and Equipment	8,623	8,265	4.3%
Nonmetallic Minerals	3,402	2,941	15.7%
Petroleum Products	1,717	1,310	31.1%
Pulp, Paper, and Allied Products	27,086	24,725	9.5%
Stone, Clay and Glass Products	15,144	14,181	6.8%
Trailer or Container	46,384	43,021	7.8%
Waste and Scrap Materials	11,525	9,539	20.8%
All Other Carloads	89,864	109,700	-18.1%
Total	370,899	364,925	1.6%

STEELROADS EVENT REPORTING- DECEMBER 2005

**Events Reported via Steelroads
2004-2005**



Number of Active Railroads



Reporting events with the Steelroads Event Reporting module continues to be one of the short line and regional railroad industry’s preferred methods of providing shipment visibility to customers. In December, over 62,000 events were reported as railroads strive to keep their records and their customers up-to-date.

This free service allows Event Reporters to easily record a wide variety of events, such as interchanges and placements. Once learning how simple it is to record these events, users often exclaim, “I wish I had signed up for Steelroads months ago!”

Get started today by logging onto www.steelroads.com and clicking on *Become a Member*.

RMI RAILCONNECT INDEX OF SHORT LINE TRAFFIC

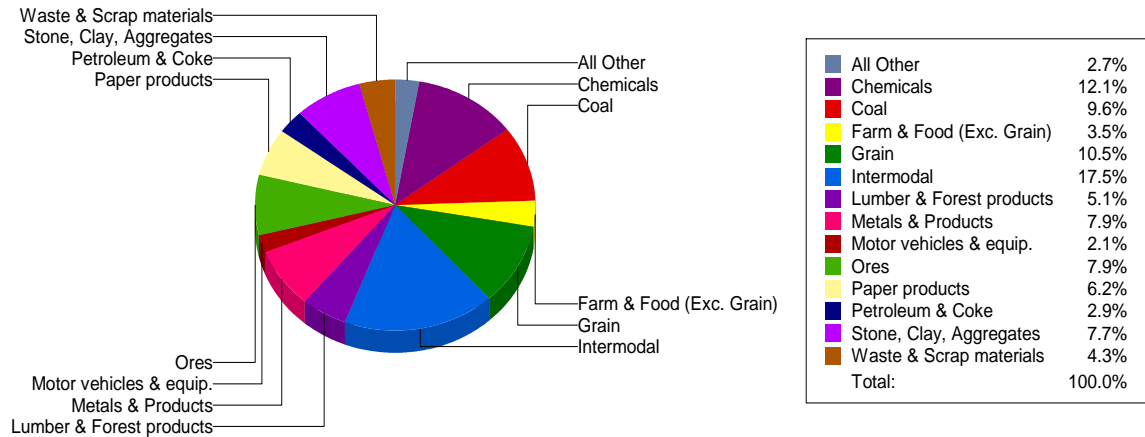
For the week ending: 12/31/2005

Number of Railroads: 212

	Current Week			Year-To-Date		
	2005	2004	% Change	2005	2004	% Change
Carloads Handled						
Coal	10,025	8,870	13.02%	491,363	504,685	-2.64%
Grain	8,887	8,260	7.59%	538,431	524,549	2.65%
Farm & Food (Exc. Grain)	3,356	2,921	14.89%	177,763	160,971	10.43%
Ores	8,897	7,795	14.14%	403,879	410,970	-1.73%
Stone, Clay, Aggregates	6,453	5,172	24.77%	396,429	353,238	12.23%
Lumber & Forest Products	4,319	4,103	5.26%	263,218	252,295	4.33%
Paper Products	6,281	5,660	10.97%	315,908	303,212	4.19%
Waste & Scrap Materials	4,241	4,082	3.90%	218,988	219,024	-0.02%
Chemicals	11,011	9,792	12.45%	619,021	580,941	6.55%
Petroleum & Coke	4,620	3,277	40.98%	145,866	127,783	14.15%
Metals & Products	9,149	8,027	13.98%	405,928	394,960	2.78%
Motor Vehicles & Equipment	1,381	1,517	-8.97%	106,402	108,843	-2.24%
Intermodal	13,866	11,485	20.73%	893,104	711,686	25.49%
All Other	2,249	2,917	-22.90%	139,373	154,748	-9.94%
Total	94,735	83,878	12.94%	5,115,673	4,807,905	6.40%

RailConnect Index

Year-To-Date



RAILROAD TRAFFIC

According to the AAR, U.S. carloads were up 4.4 percent in the week ending January 14, 2006, with 340,539 cars originated, compared to 326,156 cars originated in 2005. Carloads for U.S. Non-Class I's that submit data to the AAR were down 22.7 percent for the week and are down 22.0 percent for the year to date. U.S. intermodal traffic was up 12.3 percent for the week and is up 3.0 percent for the year to date. U.S. and Canadian intermodal traffic is up 3.1 percent for the year, with an estimated total of 63.3 billion ton-miles.

For just the week ending January 7, 2005, U.S. carloads were down 1.5 percent and carloads for U.S. Non-Class I's that submit data to the AAR were down 5.8 percent. Carloads were down 7.3 percent in the East and up 3.4 percent in the West. U.S. intermodal traffic was down 6.6 percent for the week.

EMBARGO NOTICES & REROUTE ORDERS

A complete listing of embargo notices is available at embargo.railinc.com.

American Short Line and Regional Railroad Association
 50 F Street, N.W., Suite 7020, Washington, DC 20001
 (202) 628-4500 FAX (202) 628-6430 aslrra@aslrra.org