

DEPARTMENT OF TRANSPORTATION  
FEDERAL RAILROAD ADMINISTRATION

---

DOCKET NO. FRA-2019-0072  
AMENDMENTS TO BRAKE SYSTEM SAFETY STANDARDS GOVERNING OPERATIONS  
USING AN ELECTRONIC AIR BRAKE SLIP SYSTEM

---

SUPPLEMENTAL COMMENTS OF  
THE ASSOCIATION OF AMERICAN RAILROADS  
AND THE  
AMERICAN SHORT LINE AND REGIONAL RAILROAD ASSOCIATION

---

The Association of American Railroads (“AAR”) and the American Short Line and Regional Railroad Association (“ASLRRA”) on behalf of themselves and their member railroads (“the Railroads”), submit the following supplemental comments in response to FRA’s January 15, 2021, NPRM proposing to revise 49 C.F.R. Part 232 to address the use of electronic air brake slips (“eABS”) to track mechanical inspections and freight car mileage.<sup>1</sup> AAR and ASLRRA previously submitted comments on the NPRM on March 16, 2021.<sup>2</sup> With this supplemental filing, AAR and ASLRRA wish to reiterate and provide additional support for FRA’s action to modernize and improve its existing air brake inspection regulations and to implement certain

---

<sup>1</sup> AAR is a trade association whose membership includes freight railroads that operate approximately 83% of the line-haul mileage, employ 95% of the workers, and account for 97% of the freight revenues of all railroads in the United States; and passenger railroads that operate intercity passenger trains and provide commuter rail service. ASLRRA is a non-profit trade association representing the interests of approximately 500 short line and regional railroad members and railroad supply company members in legislative and regulatory matters. Short lines operate 50,000 miles of track in 49 states, touching in origination or termination one out of every four cars moving on the national railroad system, serving customers who otherwise would be cut off from the national railroad network. 86 Fed. Reg. 3,957 (Jan 15, 2021).

<sup>2</sup> See Document No. FRA-2019-0072-0009; available online at: <https://www.regulations.gov/comment/FRA-2019-0072-0009>. The Railroads also wish to correct an inadvertent error contained in their initial March 16 comment. In the first full sentence on page 10, the word “all” should have read “only” when describing the freight cars traveling between Newport and North Little Rock, Ark. respectively.

proposals in AAR's 2019 petition for rulemaking on the same topic.<sup>3</sup> As explained in more detail in comments recently submitted by the Railroads to the Office of the Secretary of Transportation, this rulemaking, if finalized, would move safety forward while also directly advancing climate and environmental goals.<sup>4</sup>

**Data Supports a 1,500 Mile Qualified Person (“QP”) Inspection Interval.**

AAR and Railinc Corporation (“Railinc”) have conducted a data analysis to further support the proposition that QP-performed inspections should not be required more frequently than every 1,500 miles.<sup>5</sup> The data for the most recent eleven-year period shows that maintenance and repair intervals for freight equipment far exceed a 1,000-mile interval. In addition (and as noted in the Railroads’ initial comment), to date the industry has installed over 15,000 wayside detection technology systems across the North American rail network, which continually evaluate equipment performance and detect certain brake and mechanical defects that human visual inspectors are unable to detect. Given the maintenance and repair data presented here, as well as the deployment of superior detection technology, extension of the QP-performed inspection interval to 1,500 miles poses no threat to safety and is well-warranted.

---

<sup>3</sup> AAR Petition for Rulemaking at Docket No. FRA-2019-0072; available online at: <https://www.regulations.gov/search?filter=fra-2019-0072>.

<sup>4</sup> See Docket No. DOT-OST-2021-0036-0018. Available online at: <https://www.regulations.gov/comment/DOT-OST-2021-0036-0018>.

<sup>5</sup> The term qualified person is as defined at 49 C.F.R. § 232.5. Railinc is a wholly owned subsidiary of AAR and handles many data-related functions for the freight rail industry.

## Methodology

Repair data on all Class I-owned freight cars and cars owned by one major private car owner for the years 2010 through 2020 was analyzed.<sup>6</sup> The analysis was limited to need-based repairs and maintenance performed as a result of inspections/wayside detector alerts, and did not include planned or programmed date-driven maintenance. The data was sorted into three categories based on complexity of repair: major, minor, and maintenance, defined as follows:<sup>7</sup>

- Major Repairs- repairs that require special equipment or significant labor hours and are significant to a freight car's intended performance. Examples include brake related repairs, coupler replacements, and wheelset replacements (bearing/wheel/axle replacement).
- Minor Repairs- repairs that can be performed on an expedite track and do not require special tools or extensive labor. Examples include repairs to safety appliances, fasteners, and components not requiring special equipment.
- Maintenance- light maintenance activities that can be performed in a yard and are of the "general upkeep" nature. Examples include consumable brake shoes and air-hose adjustments/replacements.

The categorization of repair type was based on the industry standard job codes. The matrix for these repair types is attached as Appendix A to this comment. To avoid double- or

---

<sup>6</sup> Data for one Class I railroad's equipment only included the years 2015 through 2020, due to lack of data availability for prior years.

<sup>7</sup> These categories are based on FRA definitions applicable to periodic freight brake systems maintenance and testing. The terms "major repair" and "minor repair" are defined at 49 C.F.R. § 232.303(a)(2)-(3).

multiple-counting repairs of a car for a single event, only the highest-level repair performed was included. For example, in some cases, a minor repair or maintenance was performed on a car while on a yard or expedite track, and it was determined that the car also needed to be shopped for a major repair. In these instances, a single major repair event was counted. Using Railinc's mileage system, miles between each of these repair events, by car, was calculated and aggregated. To address potential bias from outlier data, both average and median repair intervals were calculated.

### **Findings**

Figures 1 and 2 below show the average and median miles between the three repair categories, in comparison to the existing (1,000 mile), and the AAR-proposed (1,500 mile), QP inspection intervals.

Figure 1 - Average Miles Between Repair Events

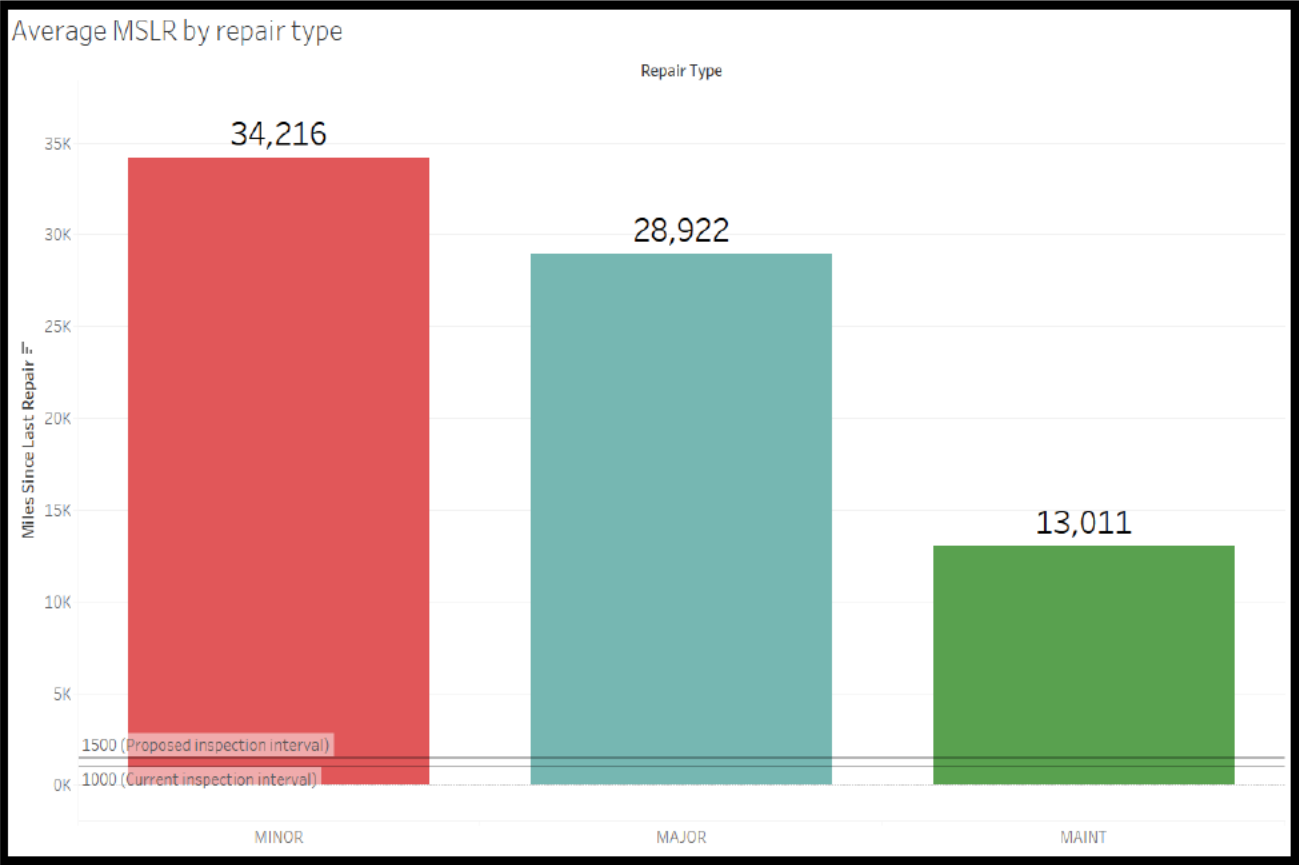
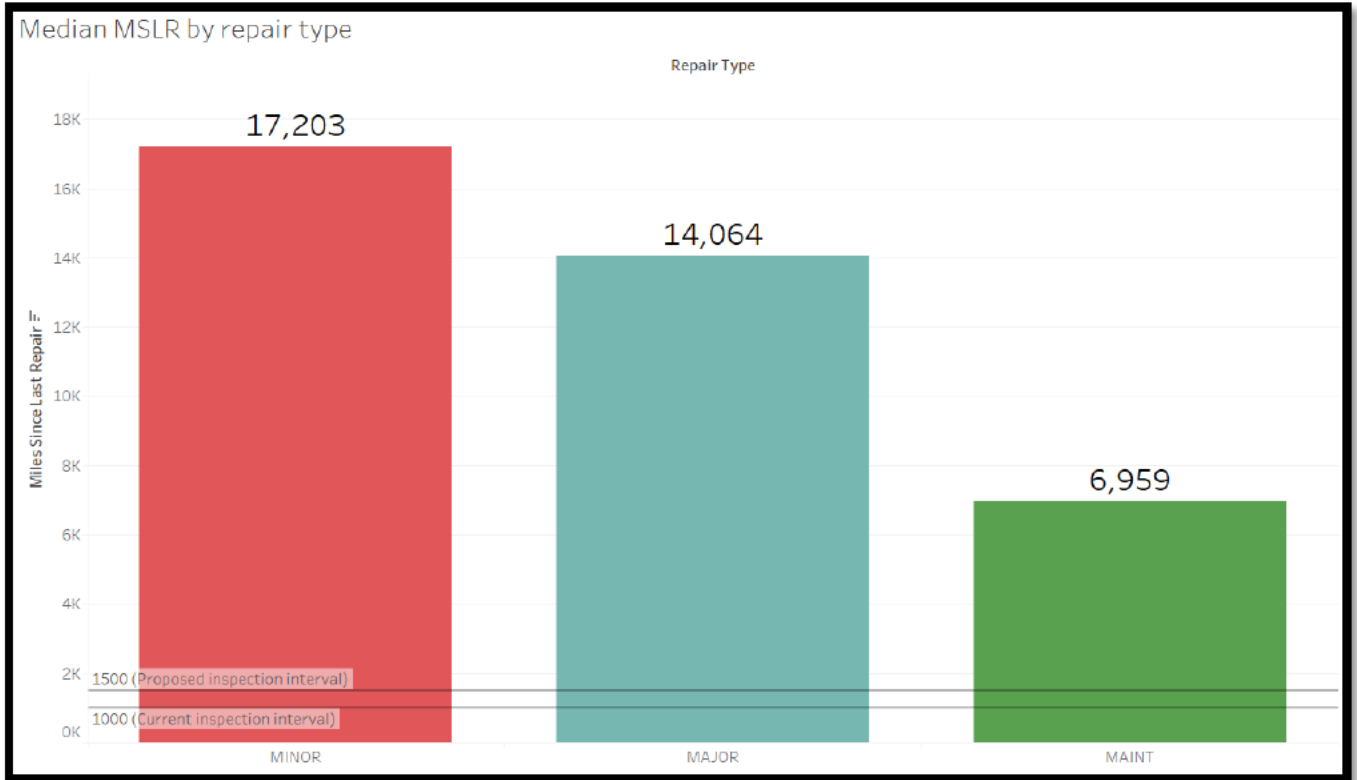


Figure 2 - Median Miles Between Repair Events



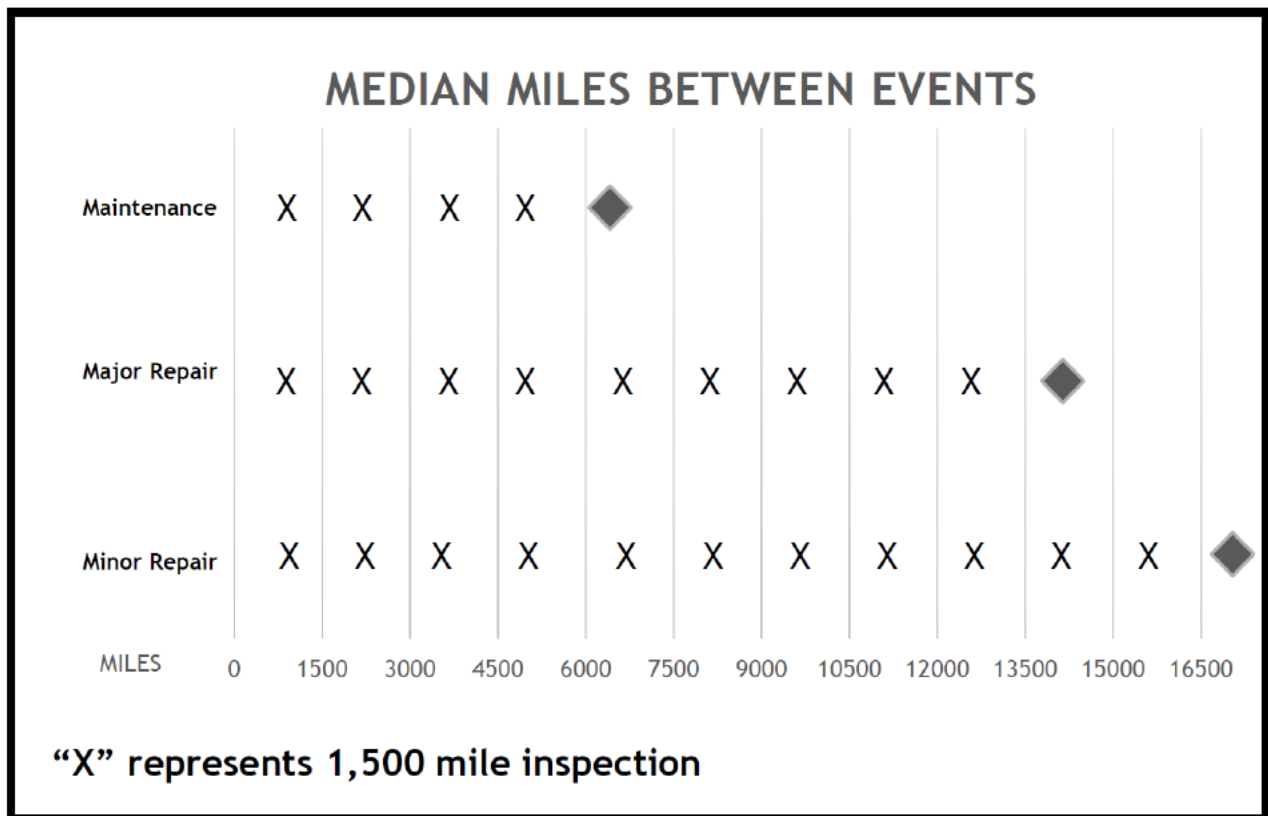
As these charts show in dramatic fashion, both the QP-inspection frequency required under existing FRA regulations (1,000 miles), and a proposed new inspection frequency (1,500 miles) occur far more frequently than actual repair events.<sup>8</sup> In other words, even the proposed 1,500-mile interval will continue to result in a substantial number of redundant inspections (an inspection that is not reasonably likely to detect a needed repair). A relatively small change in

<sup>8</sup> Importantly, a repair event does not mean that a component has failed. Most repairs are performed to avoid a failure event. Early detection resulting from a railroad’s internal guidelines and automatic detection systems allow for proactive replacement of components at opportune times before risk of failure occurs, improving freight car performance and operations.

the inspection frequency would still reflect a highly conservative approach to ensuring that freight cars moving on the network are well-maintained and in good working order.

Figures 3 below illustrates the number of inspections that would occur within the three median repair intervals under a 1,500-mile inspection regime:

**Figure 3 – Number of 1,500-mile Inspections at Median Maint./Repair Intervals**



Viewed another way (average intervals instead of median), the data show that the average interval between major repair events is 28,922 miles, which means that even under the extended 1,500-mile inspection interval, on average nineteen inspections will be conducted before the need for such a repair is detected. For minor repair events, where the average interval is 34,216 miles, twenty-two inspections will be conducted between repairs under the

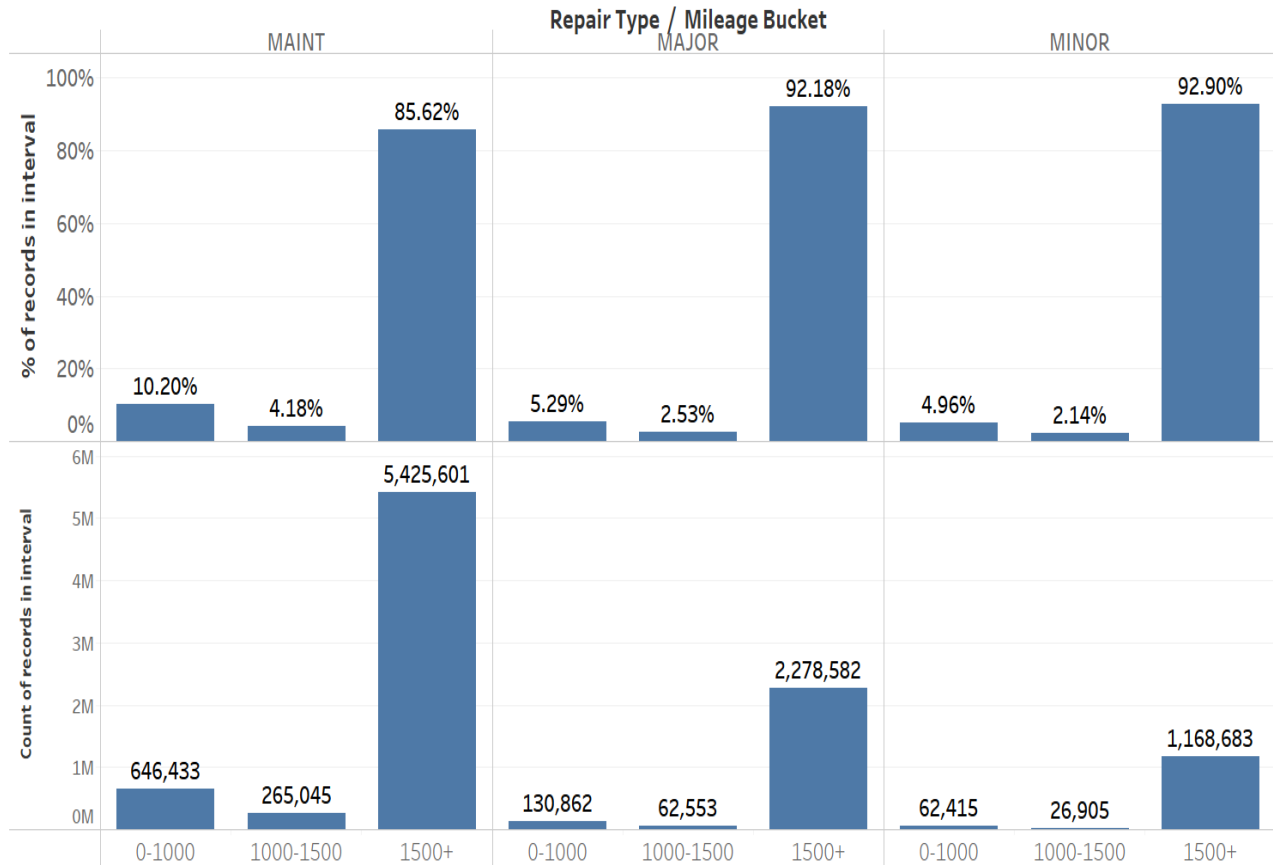
proposed 1,500-mile interval. Even for maintenance events, which have the shortest intervals, a regulation change from 1,000 to 1,500 miles would still result in an average of eight inspections between repairs.

Figure 4 shows the distribution of repair events in each category, sorted by mileage since last inspection (0-1,000 miles, 1,000-1,500 miles, greater than 1,500 miles). Across all repair types, a very small fraction of repairs occurs between zero to 1,000-miles, and an even much smaller fraction between 1,000 and 1,500 miles. The majority of events fall into the maintenance category. This analysis is conservative because, as noted above, “repairs” are often made by railroads proactively, not because a component has actually reached a condemnable limit or failed.



**Figure 4 – Percent and Count of Repair Events within Relevant Intervals**

Percent / Counts of repairs within relevant intervals



There are several additional factors that make this analysis conservative. Intermodal cars (largely privately owned), which represent a sizable and growing component of the total car population, are not included in the analysis. Intermodal cars likely have greater mileage intervals between repairs and maintenance than do other types of rail cars.<sup>9</sup> Additionally,

<sup>9</sup> Intermodal cars are subject to different operating conditions due to their origin/destination at intermodal terminals, where containers are lifted off and on the cars. The cars are not left unattended while “placed at industry” or subject to being moved/damaged by customers. They are rarely humped and are switched less often than other railcars. When intermodal cars are switched, it is commonly in the form of moving blocks of cars. Multi-platform cars equate to less couplers, and related parts, per train. Although intermodal equipment may be subject to 286,000 lb. axle loads, this is usually not the case.

including a shorter timeframe for one Class I railroad limits the upper mileage limit between repairs for repairs to its cars. The analysis is also conservative because in practice, most cars are inspected before they reach the mileage threshold for inspection due to fixed terminal locations (*e.g.*, all terminals are not located exactly 1,000 or 1,500 miles apart).

\* \* \*

The data shows that freight cars consistently and safely travel a multitude of times farther than 1,000-miles – or 1,500 miles - before repairs or maintenance are necessary, regardless of whether a QP or QMI performs an inspection. As indicated in the Railroads March 2021 comment in this proceeding, the Railroads estimate over 30% of the train brake inspections contemplated by this NPRM are performed by QPs at present. Even FRA’s proposed 2,500-mile inspection interval applicable for QMI inspections would provide an overwhelming margin of safety when evaluated against repair event likelihood. In the final rule, FRA should adopt a 1,500-mile interval for QP-inspected freight cars. This modest change would unlock greater safety and climate-related benefits (as described in the Railroads initial comment in this proceeding), without any countervailing negative safety impact. The Railroads urge FRA to

demonstrate that regulatory modernization can deliver positive safety and environmental impacts.

Respectfully submitted,



Kathryn D. Kirmayer  
Joseph St. Peter  
Association of American Railroads  
425 3<sup>rd</sup> Street, SW, Suite 1000  
Washington, DC 20024  
(202) 639-2100



Sarah Grimmer Yurasko  
General Counsel  
American Short Line and Regional Railroad  
Association  
50 F Street, NW, Suite 500  
Washington, DC 20001-1597  
(202) 585-3448

September 24, 2021

## Appendix A – Industry Job Code Mapping to Maintenance Category

JOB_CODE	DESCRIPTION	MAINT	MINOR	MAJOR
1340	AB VALVE VENT PROTECTOR	X		
1386	B1 QUICK SERVICE VENT PROTECTOR	X		
1404	VENT VALVE VENT PROTECTOR	X		
1161	ANGLE COCK / END COCK HANDLE	X		
1162	END COCK 1 1/4"	X		
1163	ANGLE COCK / END COCK HANDLE AND TOP CAP ASSEMBLY	X		
1165	AIR HOSE SUPPORT COMPLETE - NON-METALLIC	X		
1167	AIR HOSE SUPPORT COMPLETE - METALLIC	X		
1172	FLEXIBLE BRANCH PIPE HOSE	X		
1180	FLEXIBLE BRAKE PIPE HOSE, UNDER 59 INCHES	X		
1184	FLEXIBLE BRAKE PIPE HOSE 59 INCHES OR OVER	X		
1186	FLEXIBLE HOSE, 3/4 INCH OR SMALLER	X		
1626	EOT AIR BRAKE HOSE-AAR APPROVED STANDARD COUPLING	X		
1628	AIR BRAKE HOSE-AAR APPROVED STANDARD COUPLING	X		
1629	AIR BRAKE HOSE-AAR APPRVD, STRAIGHT SHANK COUPLING	X		
1630	AIR BRAKE HOSE 33" OR OVER	X		
1210	AIR HOSE EXTENSION COUPLING	X		
1742	BRAKE CONNECTION PIN	X		
1460	Piston Travel Indicator	X		
1506	BRAKE LINE HOSE ASSEMBLY, LESS TEST FITTING	X		
1768	BOTTOM ROD SAFETY SUPPORT, AAR APPROVED	X		
1770	BRAKE PIN LOCKING DEVICE	X		
1153	BODY MOUNTED BRAKES-TRUCK LEVER ADJUSTMENT	X		
1830	BRAKE SHOE CAST IRON HI PHOSPHOROUS	X		
1838	BRAKE SHOE-COMP. HI-FRCT 1-1/2 IN.	X		
1840	BRAKE SHOE-COMP, HI-FRCT 2 IN.	X		
1842	BRK SHOE-COMP-HI-FRCT 1 1/2 IRN INS-RED	X		
1843	BRK SHOE-COMP-HI-FRCT 2 IRON INS (RED)	X		
1844	BRAKE SHOE-COMP, LOW FRICTION (YELLOW)	X		
1845	BRK SHOE-HCF-HI-FRCT 1 1/2 -INCH (RED)	X		
1846	BRK SHOE-HCF-HI-FRCT 2 -INCH (RED)	X		
1852	BRAKE SHOE KEY	X		

2075	COUPLER KNUCKLE PIN, NON-METALLIC	X		
2076	COUPLER KNUCKLE PIN, METALLIC	X		
2104	COUPLER DRAFT KEY RETAINER	X		
2108	COUPLER DRAFT KEY RETAINER LOCK	X		
2116	COUPLER DRAFT KEY WASHER	X		
2120	COUPLER DRAFT KEY RETAINER, OBSOLETE	X		
4928	EDGE PROTECTOR, METAL	X		
4930	EDGE PROTECTOR, PLASTIC	X		
4400	COTTER OR SPLIT KEY	X		
4538	SIDE DOOR OR END DOOR CLOSED	X		
4608	STENCIL REPORTING MARKS- 1 END	X		
4612	STENCIL REPORTING MARKS - 1 SIDE	X		
4616	STENCIL REPORTING MARKS- 2 SIDES & ENDS	X		
4624	BUILT STENCIL-PER SIDE	X		
4626	BRAKE CYLINDER PISTON TRAVEL DECAL	X		
4628	THIS CAR EXCESS HEIGHT DECAL	X		
4712	BOTTOM OUTLET CAP, THREADED TYPE	X		
4716	BOTTOM OUTLET CAP, CAM-LOCK TYPE	X		
1128	INSPECTION ASSOCIATED WITH EHMS LORF-AHS ALERT		X	
1148	ADJUST PISTON TRAVEL, TRUCK MOUNTED BRAKE SYSTEMS		X	
1150	GROUP A - PISTON TRAVEL ADJUSTMENT		X	
1151	GROUP B - PISTON TRAVEL ADJUSTMENT		X	
1152	GROUP C - PISTON TRAVEL ADJUSTMENT		X	
1154	TMX Piston Travel Adjustment		X	
1155	SLACK ADJUSTER TEST		X	
1220	PIPE FITTING, RFP, 3/4 INCHES OR LESS		X	
1268	CUT-OUT COCK, ANY SIZE, COMPLETE		X	
1270	DIRT COLLECTOR, COMPLETE		X	
1272	COMBINATION DIRT COLL & CUT-OUT COCK, COMPLETE		X	
1276	DIRT COLLECTOR CHAMBER, COMPLETE, SEPARATELY		X	
1356	RELEASE VALVE HANDLE COMPLETE, ANY TYPE		X	
1360	RELEASE VALVE ROD COMPLETE, ANY TYPE		X	
1384	QUICK SERVICE VALVE, COMPLETE		X	
1388	QUICK SERVICE VALVE		X	
1392	REDUCTION RELAY PIPE BRACKET PORTION		X	
1396	NO. 8 VENT VALVE, COMPLETE		X	
1398	KM2 OR VX VENT VALVE, COMPLETE		X	
1400	NO. 8 VENT VALVE		X	
1401	EMPTY LOAD SENSOR VALVE MNTING GASKET (GROUP 1)		X	
1402	KM2 OR VX VENT VALVE		X	

1403	E/L PROPORT. VALVE MNTING GASK (O-RING) (GROUP 1)		X	
1504	PIPE UNION SOCKET WELD, LESS TEST FITTING		X	
1160	ANGLE COCK, BALL TYPE		X	
1164	ANGLE COCK-OTHER THAN BALL TYPE		X	
1169	ANGLE COCK REBUILD KIT		X	
1188	PIPE, 3/4 INCHES OR SMALLER		X	
1192	PIPE, 1 OR 1-1/4 INCHES		X	
1194	BRAKE PIPE, ANY SIZE - BENDING		X	
1197	PIPE, 3/4 INCH OR LESS-STRAIGHTEN OFF CAR W/ HEAT		X	
1198	PIPE, 1 OR 1-1/4 INCH-STRAIGHTEN OFF CAR WITH HEAT		X	
1200	PIPE NIPPLE, S.W. 1-1/4 INCHES		X	
1204	PIPE FITTING, E.H. 3/4 INCHES OR LESS		X	
1208	PIPE FITTING, E.H. 1 OR 1-1/4 INCHES		X	
1212	PIPE UNION OR TEE, E.H. 3/4 INCHES OR LESS		X	
1216	PIPE UNION OR TEE, E.H. 1 OR 1-1/4 INCHES		X	
1224	PIPE FITTING,RFP,1 OR 1-1/4 INCHES		X	
1227	PIPE FITTING RFP WELDED 3/4 INCHES OR LESS		X	
1228	PIPE FITTING, RFP, WELDED 1 OR 1-1/4 INCHES		X	
1232	PIPE FITTING - COMPRESSION, 3/4 INCHES OR LESS		X	
1236	PIPE FITTING - COMPRESSION, 1 OR 1-1/4 INCHES		X	
1238	LOK-RING REPAIR COUPLING, 3/8 INCH		X	
1239	LOK-RING REPAIR COUPLING, 3/4 INCH		X	
1240	LOK-RING REPAIR COUPLING, 1 INCH		X	
1241	LOKRING REPAIR COUPLING, 1.25 INCHES		X	
1244	PIPE FITTING GASKET - OR SEAL - SEPARATELY		X	
1246	LOK-RING FLANGE FITTING, 3/8 INCH		X	
1247	LOK-RING FLANGE FITTING, 3/4 INCH		X	
1248	LOK-RING FLANGE FITTING, 1 INCH		X	
1249	LOK-RING FLANGE FITTING, 1.25 INCHES		X	
1260	CAP SCREW, AIR BRAKE PART, RENEWED		X	
1264	BRANCH PIPE TEE BODY		X	
1492	TRUCK BRAKE CYLINDER HOSE, COMPLETE		X	
1632	COUPLER ATTACHED BRACKET		X	
1680	REPLACEABLE FIXED BRAKE HEAD		X	
1556	SLACK ADJUSTER GROUP A		X	
1574	SLACK ADJUSTER - GROUP A, B, C, D, F OR G - OBSOLETE		X	
1576	SLACK ADJUSTER, GROUP E		X	
1578	SLACK ADJUSTER GROUP F		X	
1580	SLACK ADJUSTER GROUPS A, B & G - OBSOLETE		X	
1584	SLACK ADJUSTER, GROUP H		X	
1586	SLACK ADJUSTER ACTUATOR/CONTROL ROD		X	

1588	SLACK ADJUSTER, GROUP J		X	
1590	SLACK ADJUSTER, GROUP K		X	
1592	SLACK ADJUSTER, GROUP L		X	
1594	SLACK ADJUSTER, GROUP M		X	
1596	SLACK ADJUSTER, GROUP N		X	
1598	SLACK ADJUSTER, GROUP O		X	
1600	SLACK ADJUSTER, GROUP P		X	
1601	SLACK ADJUSTER, GROUP Q		X	
1603	SLACK ADJUSTER, WATER RESISTANT, GROUP R		X	
4469	R & R SLACK ADJUSTER, ANY TYPE		X	
1452	BODY MOUNTED CYLINDER PUSH ROD		X	
1496	TRUCK BRAKE CYLINDER PUSH ROD		X	
1498	TEST FITTING, BRK CYL MEASUREMENT TAP & CAP 1/4 IN		X	
1500	FLANGE ADAPTER, LESS TEST FITTING		X	
1502	FLANGED SOCKET WELD, LESS TEST FITTING		X	
1505	3/4 INCH SADDLE-MOUNT WELD FIT, LESS TEST FIT		X	
1792	BOTTOM ROD		X	
1794	BOTTOM ROD-TRUCK MOUNTED		X	
1796	TOP ROD, ANY SIZE DIAMETER		X	
1800	BRAKE LEVER		X	
1802	BRAKE LEVER, TRUCK MOUNTED		X	
1804	BRAKE LEVER GUIDE OR CARRIER		X	
1808	BRAKE DEAD LEVER GUIDE		X	
1812	DEAD LEVER GUIDE BRACKET		X	
1814	TOP ROD JAW, WELD REP, ANY SIZE DIAM		X	
1816	TOP ROD FITTING, WELD REP, ANY SIZE DIAM		X	
1856	HAND BRAKE HOUSING ASSEMBLY, GROUP A		X	
1860	HAND BRAKE HOUSING ASSEMBLY, GROUP B		X	
1864	HAND BRAKE HOUSING ASSEMBLY, GROUP C		X	
1868	HAND BRAKE HOUSING ASSEMBLY, GROUP D		X	
1872	HAND BRAKE HOUSING ASSEMBLY, GROUP E		X	
1876	HAND BRAKE ASSEMBLY, GROUP F		X	
1880	HAND BRAKE HOUSING ASSEMBLY, GROUP G		X	
1884	HAND BRAKE HOUSING ASSEMBLY, GROUP H		X	
1888	HAND BRAKE HOUSING ASSEMBLY, GROUP I		X	
1890	HAND BRAKE HOUSING ASSEMBLY, GROUP J		X	
1892	HANDBRAKE HOUSING ASSEMBLY GROUP K		X	
1894	HANDBRAKE HOUSING ASSEMBLY GROUP L		X	
1896	HAND BRAKE HOUSING ASSEMBLY, GROUP M		X	
1898	HAND BRAKE HOUSING ASSEMBLY, GROUP N		X	
1900	HAND BRAKE HOUSING ASSEMBLY, GROUP O		X	
1902	HAND BRAKE HOUSING ASSEMBLY, GROUP P		X	

1904	HAND BRAKE HOUSING ASSEMBLY, GROUP Q		X	
1906	HAND BRAKE HOUSING ASSEMBLY, GROUP R		X	
1908	HAND BRAKE HOUSING ASSEMBLY, GROUP T		X	
1909	HAND BRAKE HOUSING ASSEMBLY, GROUP U		X	
1910	HAND BRAKE HOUSING ASSEMBLY, GROUP V		X	
1916	BELL CRANK, AAR, 1966 TYPE		X	
1920	BELL CRANK, AAR, PRIOR TO 1966 TYPE		X	
1936	BRAKE WHEEL, HORIZ TYPE, GEARED BRAKE		X	
1941	BRAKE WHEEL, VERTICAL TYPE STANDARD #1		X	
1942	BRAKE WHEEL, VERTICAL TYPE STANDARD #2		X	
1960	BRAKE SHAFT, 5 FEET OR LESS		X	
1964	BRAKE SHAFT, OVER 5 FEET		X	
1968	BRAKE SHAFT RATCHET WHEEL		X	
1972	BRAKE SHAFT RATCHET PAWL		X	
1976	BRAKE SHAFT RATCHET WHEEL PAWL PLATE		X	
1980	BRAKE SHAFT RATCHET WHEEL KEY &/OR SHIM		X	
1982	HAND BRAKE RATCHET ASS'Y HORIZONTAL		X	
1984	BRAKE CHAIN HORIZONTAL		X	
1986	BRAKE CHAIN CLEVIS		X	
1988	PULLROD CLEVIS		X	
1990	LEVER FULCRUM BRACKET		X	
1992	PAINT HAND BRAKE CHAIN		X	
2052	COUPLER KNUCKLE, E50HT, E50AC OR E50HTQ		X	
2054	KNUCKLE E50HTE, E50AE, E50ARE OR E50BE		X	
2055	COUPLER KNUCKLE, E50AEV or E50BEV		X	
2056	COUPLER KNUCKLE LOCK, E40HT		X	
2057	COUPLER KNUCKLE LOCK, E42HT		X	
2058	COUPLER KNUCKLE,LOCK, E 40 HTE OR E 40AE		X	
2059	COUPLER KNUCKLE LOCK, E42HTE, E42AE or E42BE		X	
2060	COUPLER LOCK LIFTER, OBSOLETE TYPE E		X	
2064	COUPLER LOCK LIFTER, TOP, TYPE E		X	
2068	COUPLER LOCK LIFTER, BOTTOM, TYPE E		X	
2072	COUPLER KNUCKLE THROWER, TYPE E		x	
2080	COUPLER TOP HOLE CAP, WELDED		X	
2159	CARRIER WEAR PLATE/STRIKER SHIM (NON-METALLIC)		X	
2160	CARRIER WEAR PLATE/STRIKER SHIM (METALLIC)		X	
2161	CARRIER WEAR PLATE/STRIKER SHIM (MANGANESE)		X	
2172	COUPLER CARRIER, OVER 20", SPRING TYPE, METALLIC		X	
2167	CARRIER WEAR PLATE/STRIKER SHIM (NON-METALLIC)		X	
2169	CARRIER WEAR PLATE/STRIKER SHIM (METALLIC)		X	
2171	CARRIER WEAR PLATE/STRIKER SHIM (MANGANESE)		X	



2252	COUPLER KNUCKLE, TYPE F51 HT, OR F51 AC		X	
2254	COUPLER KNUCKLE, TYPE F51 HTE, OR F51 AE		X	
2255	COUPLER KNUCKLE, F51AEV		X	
2256	COUPLER KNUCKLE LOCK, F41 HT, OR F41 AC		X	
2258	COUPLER KNUCKLE LOCK, F41 HTE, OR F41 AE		X	
2259	COUPLER KNUCKLE LOCK, ROTARY, FR41AE OR RF41BE		X	
2260	COUPLER ROTARY LOCK-LIFT ASSEMBLY, TYPE F		X	
2264	COUPLER LOCK LIFT ROTOR,TYPE F		X	
2268	COUPLER KNUCKLE THROWER,TYPE F		X	
2272	COUPLER TO YOKE CONNECTION PIN,TYPE F		X	
2480	UNCOUPLING LEVER NON-TELESCOPING		X	
2482	UNCOUPLING LEVER, TELESCOPING TYPE		X	
2484	FILLER, NON-TELESCOPING UNCOUPLING LEVER BRACKET		X	
2486	UNCOUPLING LEVER SUPPORT PARTS		X	
4001	METAL RUNNING BOARD, GRATE TYPE 20 IN WIDE OR LESS		X	
4002	METAL RUNNING BOARD, GRATE TYPE OVER 20 INCH WIDE		X	
4005	METAL RUNNING BOARD, PLATE TYPE 20 IN WIDE OR LESS		X	
4006	METAL RUNNING BOARD, PLATE TYPE OVER 20 INCH WIDE		X	
4008	METAL RUNNING BOARD, END		X	
4012	METAL RUNNING BOARD, SIDE		X	
4017	METAL END CROSSOVER BOARD, 72 INCHES OR LESS		X	
4018	METAL END CROSSOVER BOARD, OVER 72 INCHES		X	
4020	METAL BRAKE STEP		X	
4022	FIBERGLASS RUN BRD, GRATE TYPE 12 IN WIDE OR LESS		X	
4024	FBRGLASS RUN BRD, GRATE OVER 12 UP TO 24 IN WIDE		X	
4026	FIBERGLASS RUN BRD, GRATE TYPE OVER 24 INCHES WIDE		X	
4028	FIBERGLASS RUNNING BOARD, END		X	
4030	FIBERGLASS RUNNING BOARD, SIDE		X	
4032	FIBERGLASS END CROSSOVER BRD, 72 INCH OR LESS EACH		X	
4034	FIBERGLASS END CROSSOVER BOARD, OVER 72 INCH EACH		X	
4036	FIBERGLASS BRAKE STEP		X	
4340	STANDARD TEMPERATURE AEI TAG, AT5110-AAR		X	
4342	STANDARD TEMPERATURE AEI TAG, AT5118-AAR		X	
4344	EOT AEI TAG, AT5549-AAR		X	
4348	HIGH TEMPERATURE AEI TAG, AT5125-AAR		X	
4350	HIGH TEMPERATURE AEI TAG, AT5133-AAR		X	
4356	AEI BRACKET W/MECH. FASTENERS		X	

4358	AEI BRACKET WELDED		X	
4900	CHAIN-TIE DOWN 3/8" ALLOY		X	
4904	WINCH SWIVEL TYPE		X	
4908	CHAIN-TIE DOWN 1/2" ALLOY		X	
4912	REPAIR LINK, CHAIN		X	
4916	CHAIN ANCHOR ASSEMBLY		X	
4920	CONTAINER PEDESTAL W/LATCH RETRACTABLE		X	
4921	CONTAINER PEDESTAL WITH AUTO LOW PROFILE LOCK		X	
4922	CONTAINER PEDESTAL WITH AUTOMATIC LOW PROFILE LOCK		X	
4923	PEDESTAL LATCH ASSEMBLY TWIST TYPE		X	
4924	PEDESTAL LATCH ASSEMBLY HOOK TYPE		X	
4925	RATCHET WINCH FOR CABLE TIE DOWN		X	
4926	CABLE ASSEMBLY, 3/8" X APPROX. 17'		X	
2572	INSP. & LUB HITCH; SCREW OPERATED TYPE		X	
2574	INSP. & LUB. HITCH; KNOCK-DOWN TYPE		X	
2576	INSP. & LUB. HITCH; STATIONARY TYPE		X	
2577	HITCH INOPERABLE, BO ID DEVICE APPLIED		X	
5002	ROLLER ASSEMBLY MODEL 5		X	
5004	STRUT PIN		X	
5006	STRUT PIN ASSEMBLY		X	
5008	LOCK ACTUATOR ASSEMBLY		X	
5012	LOCK PIN		X	
5018	LOCK SCREW NUT MODEL 5		X	
5020	LOCK SCREW		X	
5024	LOCK SCREW COLLAR		X	
5026	THRUST BEARING WASHER		X	
5028	LOCK SCREW SOCKET		X	
5032	SPRING PIN		X	
5042	ELEVATING SCREW MODEL 5		X	
5048	FRONT ELEVATING SCREW COLLAR		X	
5052	REAR ELEVATING SCREW COLLAR		X	
5056	ELEVATING SCREW SOCKET		X	
5060	ELEVATING SCREW BEARING		X	
5068	ELEVATING SCREW NUT MODELS A-1,2,5		X	
5070	SOCKET OR COLLAR BOLT & NUT		X	
5072	ROLLER PIN		X	
5268	OUTSIDE RETAINER		X	
5428	UPPER VERTICAL STRUT PIVOT PIN		X	
5448	KNOCK DOWN LEVER SPRING		X	
5452	INDICATOR		X	
5456	LOCK JAW STOP		X	

5500	REFLECTIVE SHEETING, INITIAL APPLICATION OR RENEW		X	
5502	REFLECTIVE SHEETING		X	
5504	REFLECTIVE SHEETING - OWNER NOTIFICATION		X	
4180	NUT OR SCREW TIGHTENED		X	
4184	UNION TIGHTENED		X	
4200	CHAIN		X	
4320	CARD BOARD		X	
4322	CARD BOARD BRACKET		X	
4324	METAL, DOT PLACARD HOLDER		X	
4328	WOOD, DOT PLACARD HOLDER		X	
4330	PLACARD BRACKET		X	
4332	DEFECT CARD RECEPTACLE		X	
4404	BOLT, COMMON STANDARD		X	
4406	BOLT,HT,FLT HD. 3/4" DIA. OR OVER		X	
4410	BOLT,HT,5/8 IN.DIA.OR LESS UNDER 6" LONG		X	
4412	BOLT,HT, 5/8" DIA. OR LESS		X	
4414	BOLT,HT,3/4" DIA.OR OVER,UNDER 6" LONG		X	
4416	BOLT,HT, 3/4" DIA. OR OVER		X	
4418	TWO-PIECE RIVET, NON-COATED LESS THAN 5/8 INCH DIAM		X	
4422	TWO-PIECE RIVET, NON-COATED 5/8 INCH DIA OR OVER		X	
4424	BOLT,COATED, LESS THAN 5/8" DIA		X	
4426	BOLT,COATED, 5/8" DIA. OR OVER		X	
4428	TWO-PIECE RIVET, COATED LESS THAN 5/8 INCH DIAM		X	
4430	TWO-PIECE RIVET, COATED 5/8 INCH DIA OR OVER		X	
4445	NAILS, PER ONE TENTH POUND		X	
4480	LOAD R&R FOR SAFETY APPL, OPEN TOP CAR		X	
4490	STRAIGHTEN PART OFF CAR		X	
4500	SEAL HOOK-PIN-WEDGE		X	
4506	SIDE DOOR LOCK ASSEMBLY		X	
4508	DOOR HASP		X	
4512	DOOR HASP FASTENER		X	
4580	HAND HOLD OR GRAB IRON 36 INCH OR LESS		X	
4582	HAND HOLD OR GRAB IRON-OVER 36 UP TO 72 INCHES		X	
4583	HAND HOLD OR GRAB IRON OVER 72" LONG		X	
4584	SILL STEP WITHOUT CENTER TREAD		X	
4588	SILL STEP WITH CENTER TREAD		X	
4592	LADDER TREAD		X	
4593	LADDER COMPLETE 2, 3, OR 4 TREADS		X	
4594	LADDER COMPLETE 5, 6, OR 7 TREADS		X	
4595	LADDER COMPLETE 8, 9, OR 10 TREADS		X	

4602	PAINT, ALKYD OR LATEX		X	
4700	TANK ANCHOR BAND END TIGHTENED		X	
4704	TANK ANCHOR BAND TURNBUCKLE		X	
4708	TANK ANCHOR BAND, R&R FROM TANK		X	
4748	PIPE FOR RAILINGS, 1-1/4 INCHES		X	
4750	THREADING PIPE, PER END		X	
4752	PIPE FITTING, COUPLING, ANY TYPE		X	
4754	7/8 INCHES DIAMETER SOLID STEEL ROD		X	
4760	DISCONNECTION OF TANKTRAIN COUPLING		X	
4764	TANK CAR END PLTFRM RAIL FIELD REPR-OWNER NOTIFY		X	
4800	TACK OR FILLET WELD		X	
4804	GROOVE JOINT WELD, 1/8 INCH OR LESS		X	
1144	4-PRESSURE SCT USE AN AUTOMATIC SCT DEVICE, 1 SET			X
1145	SCT USE A MANUAL SCT DEVICE, 1 SET			X
1146	SCT USE AN AUTOMATIC SCT DEVICE, 1 SET			X
1147	BRAKE CYLINDER LEAKAGE TEST, 1 SET			X
1157	RETAINING VALVE TEST			X
1159	EMPTY/LOAD VALVE TEST			X
1116	ADDITIONAL BRAKE CLEANING - ACCOUNT SUBMERGED			X
1277	ABDX EMERGENCY PORTION			X
1278	ABDX EMERGENCY PORTION, COMPLETE			X
1279	ABDXR EMERGENCY PORTION			X
1280	ABDXR EMERGENCY PORTION COMPLETE			X
1281	DB-20 EMERGENCY PORTION			X
1282	DB-20 EMERGENCY PORTION, COMPLETE			X
1283	ABDX-L EMERGENCY PORTION			X
1284	ABDX-L EMERGENCY PORTION, COMPLETE			X
1285	ABDXR-L EMERGENCY PORTION			X
1286	ABDXR-L EMERGENCY PORTION COMPLETE			X
1287	DB-20-L EMERGENCY PORTION			X
1288	DB-20-L EMERGENCY PORTION, COMPLETE.			X
1289	ABDX SERVICE PORTION			X
1290	ABDX SERVICE PORTION COMPLETE			X
1291	ABDXR SERVICE PORTION			X
1292	ABDXR SERVICE PORTION COMPLETE			X
1293	DB-10 SERVICE PORTION			X
1294	DB-10 SERVICE PORTION COMPLETE			X
1295	DB-10C SERVICE PORTION			X
1296	AB EMERGENCY PORTION			X
1298	ABD EMERGENCY PORTION			X
1300	ABD EMERGENCY PORTION, COMPLETE			X

1301	ABDW EMERGENCY PORTION			X
1302	ABDW EMERGENCY PORTION,COMPLETE			X
1303	EMERGENCY PORTION BODY GASKET			X
1304	AB SERVICE PORTION			X
1308	ABC SERVICE PORTION			X
1311	ABD SERVICE PORTION			X
1312	ABD SERVICE PORTION, COMPLETE			X
1313	SERVICE PORTION BODY GASKET			X
1316	AB PIPE BRACKET PORTION, DOUBLE-SIDED			X
1318	AB PIPE BRACKET PORTION, SINGLE SIDED			X
1320	AB PIPE BRACKET REPAIRS - BROKEN CAP SCREW			X
1321	ABDT SERVICE PORTION			X
1322	ABDT SERVICE PORTION, COMPLETE			X
1323	ABDS EMERGENCY PORTION			X
1324	ABDS EMERGENCY PORTION, COMPLETE			X
1325	ABDWS OR ABDW-2 EMERG PORTION			X
1326	ABDWS OR ABDW-2 EMERGENCY PORT, COMPLETE			X
1328	ASCTD 4-PRESSURE ACCESS PLATE FOR DB-60			X
1330	ASCTD 4-PRESSURE ACCESS PLATE			X
1332	ASCTD 4-PRESSURE RECEIVER ASSEMBLY W/O BCRD			X
1334	ASCTD 4-PRESSURE RECEIVER ASSEMBLY WITH BCRD			X
1405	EMPTY LOAD PROPOR VALVE MNTING GASK (GROUP 1)			X
1406	EMPTY LOAD SENSOR VALVE (GROUP 1)			X
1407	EMPTY/LOAD SENSOR ARM (GROUP 2 ELLCON NAT. & NYAB)			X
1408	EMPTY LOAD PROPORTIONAL VALVE (GROUP 1)			X
1410	EMPTY LOAD SENSOR VALVE (GROUP 1)			X
1411	EMPTY LOAD RESERVOIR (GROUPS 1 & 2)			X
1412	EMPTY LOAD PROPORTIONAL VALVE (Group 1)			X
1413	UNITIZED EMPTY LOAD VALVE, TRUCK SENSOR (GROUP 2)			X
1414	EMPTY LOAD SENSOR VALVE PIPE BRACKET (GROUP 1)			X
1415	UNITIZED E/ L VALVE, SLOPE SHEET MNT (GROUP 3)			X
1416	E/L PROPORTIONAL VALVE PIPE BRACKET (Groups 1 & 2)			X
1417	UNIT E/L VALVE, TRK SENSOR MNTING GASK (GROUP 2)			X
1418	J-1 CHANGE OVER PORTION			X
1419	UNIT E/L VALVE, SLOPE SHEET MNTING GASK (GROUP 3)			X
1420	PROPORTIONING VALVE, SLOPE SHEET MOUNT (GROUP 3)			X
1422	RELAY VALVE PORTION CLEANED			X
1516	RETAINING VALVE, OBSOLETE			X

1520	RETAINING VALVE, 1967 3 POSITION			X
1524	RETAINING VALVE, 4 POSITION			X
1532	RETAINING VALVE BRACKET, ANY TYPE			X
1540	MODULATING VALVE OPERATING PORTION			X
1542	MODULATING VALVE CLEANED AND/OR REPAIRED			X
1612	AB RESERVOIR COMPLETE			X
1648	BRK BEAM HGR TYP-18, CAST IRON			X
1650	BRK BEAM HGR TYP-18, COMPOSITION			X
1652	BRK BEAM UNIT TYP-18, CAST IRON			X
1654	BRK BEAM UNIT TYP-18, COMPOSITION			X
1656	BRK BEAM HGR TYP-24, CAST IRON			X
1658	BRK BEAM HGR TYP-24, COMPOSITION			X
1660	BRK BEAM UNIT TYP-24, CAST IRON			X
1662	BRK BEAM UNIT TYP-24 COMPOSITION			X
1670	BRAKE BEAM - UNIT TYPE - TMX / UBX BRAKE SYSTEM			X
1672	BRAKE BEAM, MOUNTED CYLINDER TYPE			X
1696	METALLIC BRAKE BEAM WEAR LINER			X
1697	NON-METALLIC BRAKE BEAM WEAR LINER			X
1698	MODIFY BRAKE BEAM HEADS			X
1708	BRAKE BEAM HANGER			X
1720	BRAKE HANGER BRACKET WEAR PLATE			X
1724	BRAKE HANGER BRKT WEAR PLATE SECUREMENT			X
1424	AIR BRAKE CYL, COMPLETE 10 INCH DIAMETER OR LESS			X
1428	BODY MOUNT CYLINDER HOUSING			X
1440	AB CYLINDER NON-PRESSURE HEAD			X
1444	AB CYLINDER PISTON AND HOLLOW ROD			X
1448	AB CYLINDER RELEASE SPRING			X
1454	AB CYLINDER. NON-PRESSURE HEAD SPRING GUIDE			X
1456	BODY MOUNT CYLINDER PISTON			X
1476	TRUCK BRAKE CYLINDER HOUSING			X
1480	TRUCK BRAKE CYLINDER PISTON			X
1484	TRUCK BRAKE CYLINDER COMPLETE			X
1488	TRK BRK CYL & PISTON ASSEMBLY CLEANED SEPARATELY			X
1490	MATE TRUCK BRAKE CYLINDER PISTON			X
2004	COUPLER BODY OBSOLETE			X
2009	COUPLER BODY, E 60 DC			X
2010	COUPLER BODY, SBE 60 DC			X
2011	COUPLER BODY, SBE 60 DE OR SBE 60 EE			X
2012	COUPLER BODY, SE 60 DC			X
2013	COUPLER BODY, E 60 DE OR E 60 EE			X
2016	COUPLER BODY, BE 60 AHT			X

2017	COUPLER BODY, E 60 CHT OR E 60 CC			X
2018	COUPLER BODY, SBE 60 CC			X
2019	COUPLER BODY, SBE 60 CE			X
2020	COUPLER BODY, BE 60 BHT			X
2021	COUPLER BODY, SE 60 CHT OR SE 60 CC			X
2022	COUPLER BODY, E 60 CHTE OR E 60 CE			X
2023	COUPLER BODY, SE 60 CHTE OR SE 60 CE			X
2024	COUPLER BODY, SE 60 DE OR SE 60 EE			X
2026	ANY SPECIAL E TYPE COUPLER BODY			X
2037	COUPLER BODY, SBE 67 CE OR SBE 67 DE			X
2038	COUPLER BODY, SBE 67 CC			X
2039	COUPLER BODY, E 67 CC			X
2041	COUPLER BODY, E 67 CE OR E 67 DE			X
2042	COUPLER BODY, BE67HT OR E67AHT			X
2043	COUPLER BODY, SBE 67 BC			X
2044	COUPLER BODY, SBE 67 BE			X
2047	COUPLER BODY, E 67 BHT OR E 67 BC			X
2049	COUPLER BODY, E 67 BHTE OR E 67 BE			X
2051	COUPLER KNUCKLE, E 50 OBSOLETE			X
2088	COUPLER DRAFT KEY			X
2174	COUPLER BODY EF511* - C, E, AE, BE, CE or WE			X
2175	COUPLER EF512C, EF512E, EF512AE, EF512BE or EF512CE			X
2176	COUPLER BODY, EF525C, EF525E, EF525AE or EF525BE			X
2177	COUPLER BODY EF528* - C, E, AE, BE, CE or WE			X
2180	COUPLER BODY, OBSOLETE, TYPE E/F			X
2181	COUPLER BODY, E 68 CE OR E 68 DE			X
2182	COUPLER BODY, SBE 68 CE OR SBE 68 DE			X
2183	COUPLER BODY, SE68BE			X
2184	COUPLER BODY, BE68HT, E68AHT OR E69HTE			X
2185	COUPLER BODY, E 68 BHT OR E 68 BC			X
2186	COUPLER BODY, E 68 BHTE OR E 68 BE			X
2189	COUPLER BODY, E 69 AHTE OR E 69 AE			X
2190	COUPLER BODY E 69 BE OR E 69 CE			X
2191	COUPLER BODY SBE 69 BE OR SBE 69 CE			X
2192	COUPLER BODY, SBE 68 BC			X
2193	COUPLER BODY, SBE 68 BE			X
2194	COUPLER BODY, SBE 69 AE			X
2195	ANY SPECIAL E/F TYPE COUPLER BODY			X
2196	COUPLER BODY, SE 69 AE, SE 69 BE OR SE 69 CE			X
2274	F TYPE YOKE CONNECTION PIN CARRIER			X
2276	Y47 PIN RETAINER ASSEMBLY			X
2170	COUPLER CARRIER, SPRING TYPE, NON METALLIC			X

2200	COUPLER BODY,OBSOLETE TYPE F			X
2209	COUPLER BODY, F 70 CHT OR F 70 CC			X
2210	COUPLER BODY, F 70 CHTE OR F 70 CE			X
2211	COUPLER BODY, SF 70 CHT OR SF 70 CC			X
2212	COUPLER BODY F 70 BHT			X
2213	COUPLER BODY, SF 70 CHTE OR SF 70 CE			X
2214	COUPLER BODY, F 70 BHTE			X
2215	COUPLER BODY, F70DE			X
2216	COUPLER BODY, SF70DE			X
2220	COUPLER BODY, F73BE			X
2230	COUPLER BODY F79DE			X
2233	COUPLER BODY, SF79DE			X
2234	COUPLER BODY, F 79 BHT			X
2236	COUPLER BODY, F 79 BHTE			X
2237	COUPLER BODY, F 79 CHT OR F 79 CC			X
2238	COUPLER BODY, F 79 CHTE OR F 79 CE			X
2240	COUPLER BODY, F73HT, F73AHT OR F73AC			X
2241	COUPLER BODY, F73HTE, F73AHTE OR F73AE			X
2244	COUPLER BODY, F-ROTARY HTE OR AE			X
2246	SOLID DRAW BAR, E OR F TYPE			X
2250	ANY SPECIAL F TYPE COUPLER BODY			X
2312	COUPLER YOKE, Y 40 OR BY 40			X
2313	COUPLER YOKE, Y40HT, BY40HT OR CY40HT			X
2314	COUPLER YOKE, Y40AHT OR Y40AC			X
2315	YOKE - Y40AHTE,Y40AE,SY40AE,YS93AE or WMNY40AE			X
2316	COUPLER YOKE, BY 41			X
2317	COUPLER YOKE, Y41AHT OR Y41AC			X
2318	COUPLER YOKE, Y41AHTE OR Y41AE			X
2350	COUPLER YOKE, Y 37 OR BY 37			X
2352	COUPLER YOKE Y 37 HT BY 37 HT OR Y 37 AC			X
2354	COUPLER YOKE, Y 45 OR BY 45			X
2355	COUPLER YOKE, Y45HT, Y45AHT, BY45HT OR Y45AC			X
2356	COUPLER YOKE, Y45AHTE, Y45AE OR SY294AE			X
2358	COUPLER YOKE, Y 45HTE			X
2362	COUPLER YOKE, Y49HT OR Y49AC			X
2366	COUPLER YOKE, Y49HTE OR Y49AE			X
2400	DRAFT GEAR, GROUP A			X
2404	DRAFT GEAR,GROUP B			X
2408	DRAFT GEAR,GROUP C			X
2428	DRAFT GEAR,GROUP H			X
2436	DRAFT GEAR,GROUP J			X
2440	DRAFT GEAR, GROUP K			X



2446	DRAFT GEAR, GROUP M			X
2448	DRAFT GEAR, GROUP R			X
2450	DRAFT GEAR, OBSOLETE GROUP Z			X
2452	DRAFT GEAR FOLLOWER PLATE W/O GROOVES			X
2453	DRAFT GEAR FOLLOWER PLATE W/ GROOVES OR ALT STMP E			X
2454	D/G FOLLOWER-VERTICAL PIN CONNECT CPLR			X
2456	DRAFT GEAR FOLLOWER, 1/2 IN. OFFSET TYPE			X
2468	DRAFT GEAR CARRIER			X
2600	ASF ARTICULATED CONNECTION - LABOR			X
2605	NACO ARTICULATED CONNECTION - LABOR			X
2610	WABTEC/CARDWELL WESTINGHOUSE SAC-1 ART CONN - LABOR			X
2620	ASF CONNECTOR PRIMARY PIN			X
2622	ASF RETAINING PIN			X
2630	NACO CONNECTOR PRIMARY PIN			X
2632	NACO RETAINING PIN			X
2650	WABTEC/CARDWELL WESTINGHOUSE SAC-1 SHROUD			X
2652	WABTEC/CARDWELL WESTINGHOUSE SAC-1 LOCKING WEDGE			X
2813	ROLLER BEARING GRP. B 5 1/2 X 10 OR LESS			X
2814	ROLLER BEARING GROUP B 6 X 11 INCH OR LESS			X
2816	ROLLER BEARING, GROUP B, 6-1/2X12 IN.			X
2820	ROLLER BEARING, GROUP B, 7X12 IN.			X
2822	ROLLER BEARING, GROUP B1, 6-1/2X12 IN.			X
2825	ROLLER BEARING GRP. C 5 1/2 X 10 OR LESS			X
2826	ROLLER BEARING GROUP C 6 X 11 INCH OR LESS			X
2828	ROLLER BEARING, GROUP C, 6-1/2X12 IN.			X
2830	ROLLER BEARING, GROUP B3 7 X 12			X
2832	ROLLER BEARING, GROUP C, 7X12 IN.			X
2837	ROLLER BEARING GRP. D 5 1/2 X 10 OR LESS			X
2838	ROLLER BEARING GROUP D 6 X 11 INCH OR LESS			X
2840	ROLLER BEARING, GROUP D, 6-1/2X12 IN.			X
2844	ROLLER BEARING, GROUP D, 7X12 IN.			X
2848	ROLLER BEARING, GROUP E			X
2857	ROLLER BEARING INSPECTION			X
2858	REMOVE CAP SCREW SEAL RINGS			X
2860	ROLLER BEARING, GP B2 5 1/2 X 10 OR LESS			X
2861	ROLLER BEARING, GROUP B2 6 X 11 OR LESS			X
2862	ROLLER BEARING, GROUP B2 6 1/2 X 12			X
2863	ROLLER BEARING, GROUP B2 7 X 12			X
2864	ROLLER BEARING, GROUP B4, 6-1/2X12 IN.			X
2865	ROLLER BEARING, GROUP B4, 6 x 11 IN.			X
2866	ROLLER BEARING, GROUP B3, 6 1/2 X 9 IN			X

2867	ROLLER BEARING, GROUP B5, 6 1/2 X 9 IN			X
2870	PEDESTAL ADAPTER-NARROW-11 IN OR SMALLER			X
2872	PEDESTAL ADAPTER - NARROW - 6 1/2 X 9 IN			X
2874	PEDESTAL ADAPTER-6 1/2 X 12 INCH			X
2876	PEDESTAL ADAPTER-7 X 12 INCH			X
2878	PEDESTAL ADAPTER-WIDE-11 INCH OR SMALLER			X
2880	ELASTOMERIC ADAPTER PAD (WABTEC/STANDARD CAR TRUCK)			X
2882	ELASTOMERIC ADAPTER PAD (ASF)			X
2884	PEDESTAL ADAPTER-WABTEC/STANDARD CAR TRUCK, S2-86			X
2886	PEDESTAL ADAPTER - ASF - 6 1/2 X 12 IN			X
2887	PEDESTAL ADAPTER - ASF - 6 1/2 X 9 IN			X
2889	PEDESTAL ADAPTER - NSC - 6 1/2 X 9 IN			X
2891	ELASTOMERIC ADAPTER PADS (NSC) - SET OF TWO			X
2893	ELASTOMERIC ADAPTER PAD - NEVIS			X
2895	PEDESTAL ADAPTER - NEVIS - 6 1/2 X 9 IN			X
3001	WHEEL 28" 1W HT-CP			X
3002	WHEEL 28" 1W NHT-CP			X
3004	WHEEL 28" 1W HT-CP, CB-28			X
3007	WHEEL 28" 1W NHT-CP, CB-28			X
3011	WHEEL 28" MW HT-CP			X
3012	WHEEL 28" MW NHT-CP			X
3013	WHEEL 28" MW NHT-SP			X
3014	WHEEL 28" MW HT-SP			X
3021	WHEEL 33" 1W HT-CP			X
3022	WHEEL 33" 1W NHT-CP			X
3023	WHEEL 33" 1W NHT-SP			X
3024	WHEEL 33" 1W HT-SP			X
3031	WHEEL 33" 2W HT-CP			X
3032	WHEEL 33" 2W NHT-CP			X
3033	WHEEL 33" 2W NHT-SP			X
3034	WHEEL 33" 2W HT-SP			X
3041	WHEEL 33" MW HT-CP			X
3042	WHEEL 33" MW NHT-CP			X
3043	WHEEL 33" MW NHT-SP			X
3044	WHEEL 33" MW HT-SP			X
3050	WHEEL - OBSOLETE WHEN ON SHOP OR REPAIR TRACK			X
3053	WHEEL, 33" ROUND BACK SP			X
3060	WHEEL OBSOLETE			X
3071	WHEEL 36" 1W HT-CP			X
3072	WHEEL 36" 1W NHT-CP			X
3073	WHEEL 36" 1W NHT-SP			X

3074	WHEEL 36" 1W HT-SP			X
3081	WHEEL 36" 2W HT-CP			X
3082	WHEEL 36" 2W NHT-CP			X
3083	WHEEL 36" 2W NHT-SP			X
3084	WHEEL 36" 2W HT-SP			X
3091	WHEEL 36" MW HT-CP			X
3092	WHEEL 36" MW NHT-CP			X
3093	WHEEL 36" MW NHT-SP			X
3094	WHEEL 36" MW HT-SP			X
3101	WHEEL 38" 1W HT-CP			X
3102	WHEEL 38" 1W NHT-CP			X
3103	WHEEL 38" 1W NHT-SP			X
3104	WHEEL 38" 1W HT-SP			X
3111	WHEEL 38" 2W HT-CP			X
3112	WHEEL 38" 2W NHT-CP			X
3113	WHEEL 38" 2W NHT-SP			X
3114	WHEEL 38" 2W HT-SP			X
3116	WHEEL, 33" 1W HT-CP Class D			X
3121	WHEEL 36" 1W HT-CP Class D			X
3131	WHEEL 36" 2W HT-CP Class D			X
3151	WHEEL 38" 1W HT-CP Class D			X
3250	AXLE-BC-ROLLER BRG,ANY SIZE			X
3274	AXLE-RWS-ROLLER BRG,11 JRNL OR LESS			X
3276	AXLE-RWS-ROLLER BRG, 6 1/2 X 12 IN JRNL			X
3278	AXLE-RWS-ROLLER BRG, 7 X 12 IN JRNL			X
3280	AXLE-RWS-ROLLER BRG, 6 1/2 X 9 IN JRNL			X
3328	NEW WHEEL SET 28 INCH, 6 X 11 AXLE			X
3329	TURND WHEEL SET 28 INCH, 6 X 11 AXLE			X
3333	NEW WHEEL SET 33 INCH, 6 X 11 AXLE			X
3334	TURND WHEEL SET 33 INCH, 6 X 11 AXLE			X
3336	NEW WHL SET 36 IN, 1-W 6 1/2 X 12 AXLE			X
3337	TURND WHEEL SET 36 IN, 6 1/2 X 12 AXLE			X
3338	NEW WHEEL SET 38 INCH, 7 X 12 AXLE			X
3339	TURND WHEEL SET 38 INCH, 7 X 12 AXLE			X
3340	NEW WHL SET 36, 2-W 6 1/2 X 12 AXLE			X
3341	NEW WHL SET 36 IN, 1-W 6 1/2 X 9 AXLE			X
3342	TURND WHL SET 36 IN, 6 1/2 X 9 AXLE			X
3343	NEW WHL SET 36, 2-W 6 1/2 X 9 AXLE			X
3344	NEW WHL SET 36 IN, 1-W 6 1/2 X 12 AXLE, UBR			X
3345	TURND WHEEL SET 36 IN, 6 1/2 X 12 AXLE, UBR			X
3346	NEW WHL SET 36, 2-W 6 1/2 X 12 AXLE, UBR			X
3347	NEW WHEEL SET 33 INCH, 1W 6 X 11 AXLE, UBR			X
3348	TURND WHEEL SET 33 INCH, 6 X 11 AXLE, UBR			X

3349	NEW WHEEL SET 28 INCH, 1W 6 X 11 AXLE, UBR			X
3350	TURNED WHEEL SET 28 INCH, 6 X 11 AXLE, UBR			X
3352	NEW WHL SET 36 IN, 1-W 6 1/2 X 9 AXLE, UBR			X
3353	TURNED WHEEL SET 36 IN, 6 1/2 X 9 AXLE, UBR			X
3354	NEW WHL SET 36, 2-W 6 1/2 X 9 AXLE, UBR			X
3360	NEW WHEEL SET 33 INCH 1-W, 6 X 11 AXLE, CLASS D			X
3362	NEW WHL SET 33-IN 1-W, 6 X 11 AXLE, CLASS D, UBR			X
3366	NEW WHL SET 36 IN, 1-W 6 1/2 X 12 AXLE, Class D			X
3368	NEW WHL SET 38 IN, 1-W 7 X 12 AXLE, Class D			X
3370	NEW WHL SET 36 IN, 2-W 6 1/2 X 12 AXLE, Class D			X
3371	NEW WHL SET 36 IN, 1-W 6 1/2 X 9 AXLE, Class D			X
3373	NEW WHL SET 36 IN, 2-W 6 1/2 X 9 AXLE, Class D			X
3374	NEW WHLSET 36 IN 1-W 6 1/2 X 12 AXLE Class D UBR			X
3376	NEW WHLSET 36 IN 2-W 6 1/2 X 12 AXLE Class D UBR			X
3377	NEW WHLSET 36 IN,1-W 6 1/2 X 9 AXLE Class D UBR			X
3379	NEW WHLSET 36 IN 2-W 6 1/2 X 9 AXLE Class D UBR			X
3582	FRICTION CASTING - RIDE CONTROL			X
3583	FRICTION CASTING - XCR			X
3584	FRICTION CASTING - STABILIZED TRUCK			X
3585	FRICTION CASTING - SWING MOTION TRUCK			X
3520	TRUCK BOLSTER-70 TON			X
3524	TRUCK BOLSTER-100 or 110 TON			X
3528	TRUCK BOLSTER-125 TON			X
3548	TRUCK BOLSTER - OBSOLETE			X
3560	CENTER PIN			X
3562	CENTER BOWL HORIZONTAL LINER, NON-METALLIC			X
3564	FULL BOWL LINER, NON-METALLIC			X
3566	VERTICAL WEAR LINER - CARBON STEEL			X
3567	VERTICAL WEAR LINER - STAINLESS STEEL			X
3568	CENTER BOWL SHIM			X
3570	CENTER BOWL LINER, METALLIC			X
3571	FULL BOWL LINER, METALLIC			X
3772	TRK SD FR/BLSTR FRCT CAST WEAR PLT-RD CNTRL OR XCR			X
3774	TRK SD FR/BLSTR FRCT CAST WEAR PLT-BARBER/SWNG MTN			X
3720	SIDE FRAME-70 TON OR LESS			X
3724	SIDE FRAME-100 or 110 TON			X
3728	SIDE FRAME-125 TON			X
3756	SIDE FRAME - OBSOLETE			X
3760	TRANSOM-MOUNTED INSIDE SIDE FRAME UNDER SPRINGS			X
3762	TRANSOM-MOUNTED UNDER SIDEFAMES			X
3778	PEDESTAL ROOF LINER, CLIP ON TYPE			X

3904	TRUCK SPRING, OUTER COIL, D3			X
3908	TRUCK SPRING, OUTER COIL, D4			X
3912	TRUCK SPRING, OUTER COIL, D5			X
3914	TRUCK SPRING, OUTER COIL, D7			X
3920	TRUCK SPRING, INNER COIL, D3			X
3924	TRUCK SPRING, INNER COIL, D4			X
3928	TRUCK SPRING, INNER COIL, D5			X
3932	TRUCK SPRING, INNER COIL, D6			X
3933	TRUCK SPRING, INNER COIL, D6A			X
3934	TRUCK SPRING, INNER COIL, D7			X
3940	TRK STABILIZING SPRING-BARBER OR SWING MOTION TRK			X
3942	TRUCK STABILIZING SPRING - RIDE CONTROL OR XCR TRK			X
3952	TRUCK SPRING FRICTION SNUBBER			X
3954	TRUCK SPRING HYDRAULIC SNUBBER			X
2162	COUPLER CARRIER, 20" LONG OR LESS			X
2164	COUPLER CARRIER, OVER 20" LONG			X
2166	COUPLER CARRIER, OVER 28" LONG			X
2168	COUPLER, CARRIER, 20"/LESS, SPRING TYPE, METALLIC			X
3470	GROUP COC-1			X
3472	GROUP COC-2			X
3474	GROUP COC-3			X
3476	GROUP COC-4			X
3478	GROUP COC-5			X
3480	GROUP COC-6			X
3482	GROUP COC-7			X
3486	GROUP COC-8			X
4070	LABOR, EOC CUSHIONING UNIT			X
4071	LABOR, COC CUSHIONING UNIT			X
4072	LABOR, EOCC RESTORING MECHANISM			X
4074	LABOR, REPAIR EOCC RESTORING MECHANISM ON CAR			X
5700	GROUP EOC-1			X
5702	GROUP EOC-1D			X
5704	GROUP EOC-1B			X
5706	GROUP EOC-2			X
5708	GROUP EOC-2D			X
5710	GROUP EOC-2B			X
5712	GROUP EOC-3			X
5716	GROUP EOC-3B			X
5718	GROUP EOC-4			X
5722	GROUP EOC-4B			X
5724	GROUP EOC-5			X

5726	GROUP EOC-5D			X
5728	GROUP EOC-5B			X
5730	GROUP EOC-6			X
5732	GROUP EOC-6D			X
5734	GROUP EOC-6B			X
5736	GROUP EOC-7			X
5740	GROUP EOC-7B			X
5742	GROUP EOC-8			X
5746	GROUP EOC-8B			X
5747	GROUP EOC-8F			X
5748	GROUP EOC-9			X
5750	GROUP EOC-9D			X
5752	GROUP EOC-9B			X
5754	GROUP EOC-10			X
5756	GROUP EOC-10D			X
5758	GROUP EOC-10B			X
5759	GROUP EOC-10F			X
5760	GROUP EOC-11			X
5762	GROUP EOC-11D			X
5764	GROUP EOC-11B			X
5766	GROUP EOC-12			X
5768	GROUP EOC-12D			X
5770	GROUP EOC-12B			X
5772	GROUP EOC-13			X
5776	GROUP EOC-13B			X
5778	GROUP EOC-14			X
5782	GROUP EOC-14B			X
5784	GROUP EOC-15			X
5786	GROUP EOC-15D			X
5788	GROUP EOC-15B			X
5790	GROUP EOC-16			X
5792	GROUP EOC-16D			X
5794	GROUP EOC-16B			X
5838	GROUP EOC-24			X
5842	GROUP EOC-24B			X
5843	GROUP EOC-25E			X
5846	GROUP EOC-26B			X
5847	GROUP EOC-26F			X
5850	GROUP EOC-27D			X
5880	E-TYPE CUSHION UNIT FLOATING YOKE			X
5884	F-TYPE CUSHION UNIT FLOATING YOKE			X
4080	SEPARABLE BODY CENTER PLATE 14 INCH			X
4081	SEPARABLE BODY CENTER PLATE 16 INCH			X

4082	LOW PROFILE BODY CENTER PLATE ANY SIZE			X
4090	BODY SIDE BEARING			X
4092	BODY SIDE BEARING SHIM			X
4093	BODY SIDE BEARING SHIM-MALE ART. CONNECTOR POS.			X
4094	BODY SIDE BEARING SHIM-FEMALE ART. CONNECTOR POS.			X
3572	TRK SIDE BEARING ROLLER OR FRICT BLOCK			X
3576	TRK SIDE BEARING HOUSING			X
3580	TRK SIDE BEARING ROLLER HOUSING DOUBLE			X
3588	TRUCK SIDE BEARING SHIM			X
4202	HIGH STRENGTH LOW ALLOY STEEL			X
4204	CARBON STEEL, STRUCTURAL, PRESSED			X
4206	HIGH STRENGTH ALUMINUM, STRUCTURAL, PRESSED			X
4216	FORGINGS			X
4222	CASTING, STEEL			X
4360	FIBERGLASS HATCH COVER TROUGH, 20" WIDE			X
4362	FIBERGLASS HATCH COVER TROUGH, 24" WIDE			X
4364	ALUMINUM HATCH COVER TROUGH, 20" WIDE			X
4366	ALUMINUM HATCH COVER TROUGH, 24" WIDE			X
4450	LABOR, FREIGHT CAR			X
4452	LABOR, CONSTANT CONTACT SIDE BEARING COMPONENTS			X
4458	LABOR, JACK CAR WITH TRUCK SEPARATION			X
4459	LABOR, JACK CAR - LINE OF ROAD			X
4460	ARTICULATED CONNECTION - LABOR			X
4461	LABOR, JACK CAR WITHOUT TRUCK SEPARATION			X
4462	SOLID DRAW BAR CONNECTION - LABOR			X
4464	METAL END STRAIGHTENED, BOX CAR			X
4465	LABOR-ACC TRK SIDE FRM WEAR PLT-RIDE CNTRL OR XCR			X
4466	LABOR-ACC TRK SIDE FRAME WEAR PLT-BARBER/SWING MTN			X
4467	LABOR, R&R RIDE CONTROL OR XCR SIDE FRAME			X
4468	TMX/UBX BRAKE SYSTEM - LABOR			X
4470	LABOR, DRAFT GEAR AND/OR YOKE			X
4474	R&R COUPLER BODY, E TYPE			X
4478	R&R COUPLER BODY, TYPE E/F OR F			X
4528	SIDE DOOR, R&R OR R, NON-FLUSH TYPE			X
4530	PLUG DOOR ROLLER ASSEMBLY			X
4532	SIDE DOOR, R&R OR R, FLUSH PLUG TYPE			X
4534	FLUSH PLUG TYPE DOOR REPLACED			X
4536	NON-FLUSH SIDE DOOR REPLACED			X
4756	HANDRAILS/PLATFORM RAILS - BENDING			X

4758	HANDRAILS/PLATFORM RAILS - END FLATTENED			X
4808	GROOVE JOINT WELD, OVER 1/8 INCH TO 1/2 INCH			X
4812	GROOVE JOINT WELD, OVER 1/2 INCH TO 1 INCH			X
4824	ANNEALING-NORMALIZING-STRESS RELIEVING			X